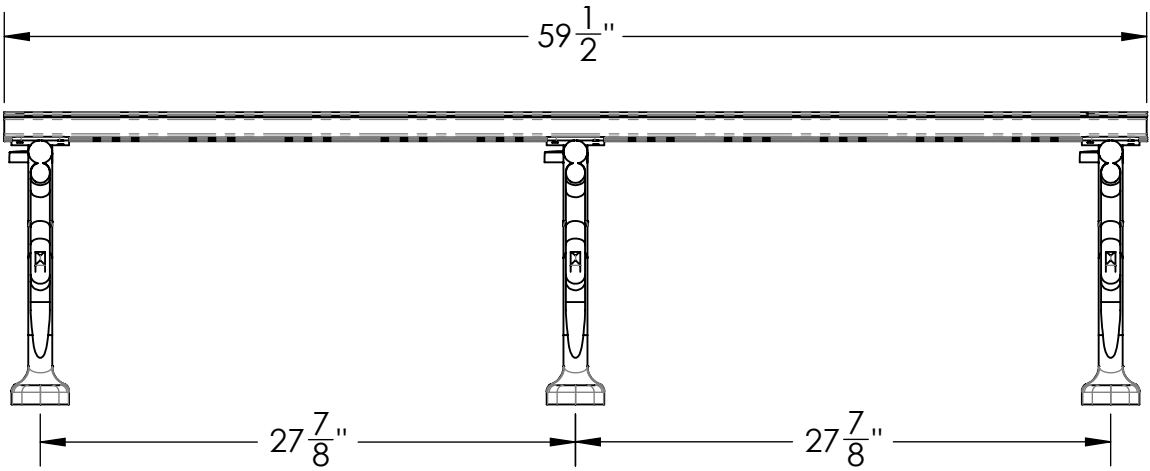
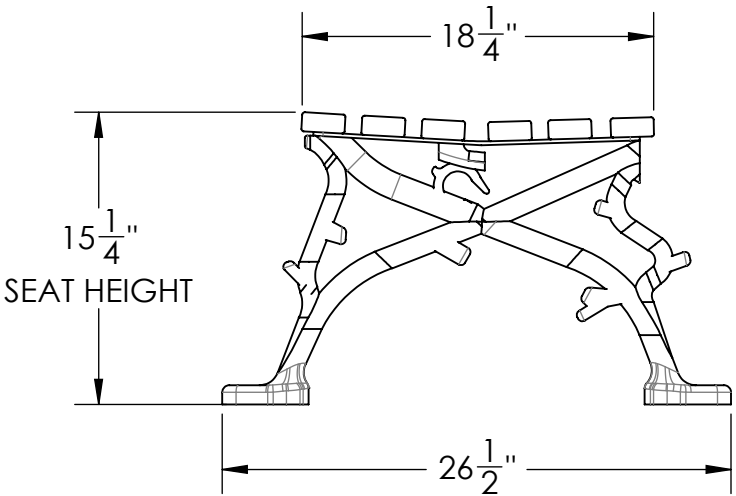
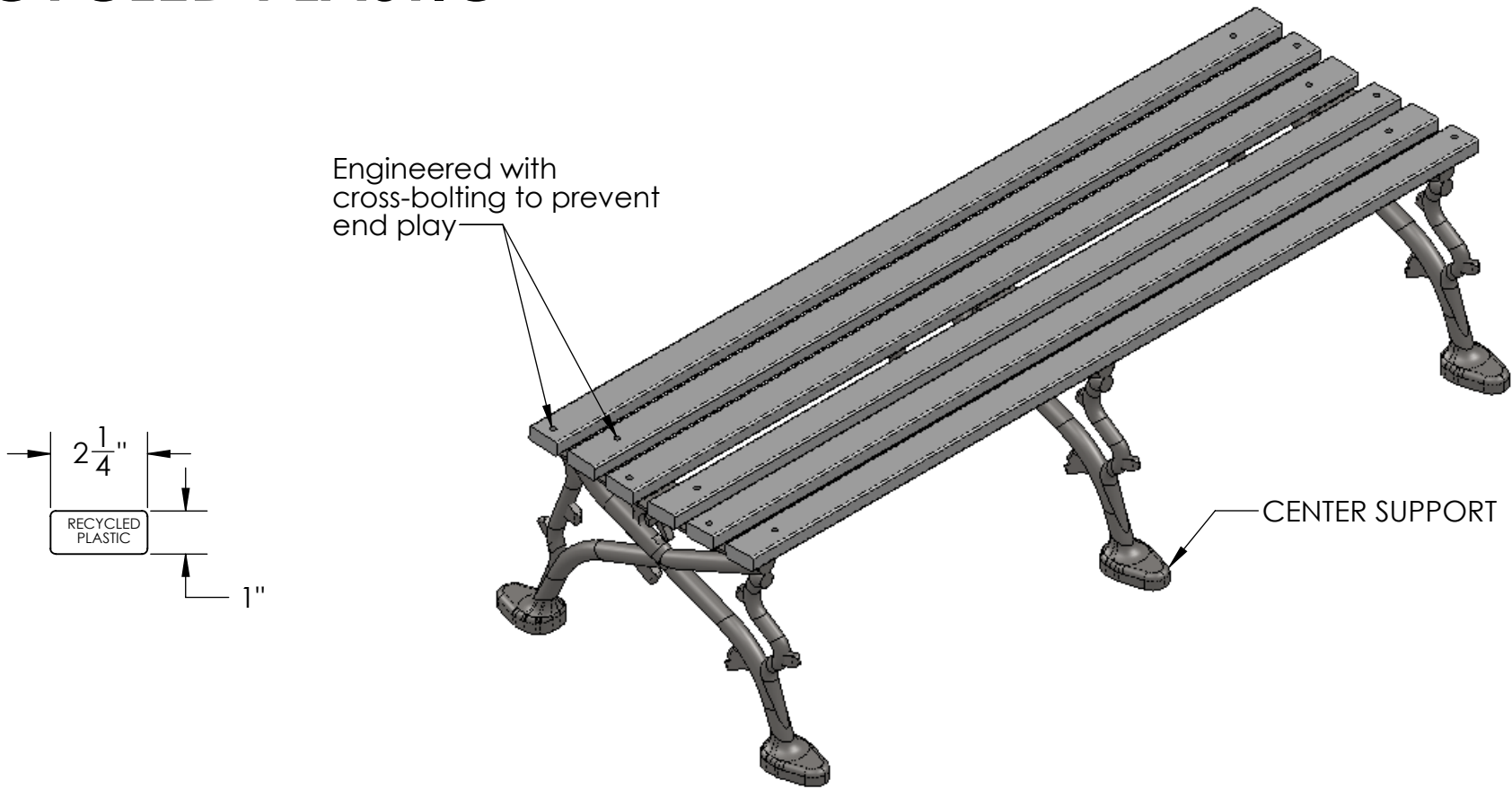


# PRODUCT SPECIFICATIONS

## WOODLAND BACKLESS BENCH - 60" RECYCLED PLASTIC

- FRAME**
- **Material:** Cast aluminum poured in permanent molds
  - **Finish:** Electro static powder coating
  - **Color:** Black, White, Green, Tan, Dk. Brown, Dk. Green, Bronze and Blue.
- PLASTIC RAILS**
- **Material:** Polystyrene
  - **Number of Rails:** 6
  - **Finish:** Cedar or Redwood
- HARDWARE**
- **Carriage Bolts:** 1/4'-20 steel zinc plate, yellow dipped
  - **Nuts:** 1/4" steel zinc plate



DESCRIPTION: <b>WOODLAND BACKLESS BENCH - 60"</b> <b>RECYCLED PLASTIC</b>			
ADDRESS: 1350 NORTH AVE. SANGER, CALIFORNIA 93657 PHONE: (559) 875-8250 FAX: (559) 875-1491 kingsrivercasting@verizon.net	THE INFORMATION CONTAINED IN THIS DRAWING IS THE SOLE PROPERTY OF KINGS RIVER CASTING. ANY REPRODUCTION IN PART OR WHOLE WITHOUT THE WRITTEN PERMISSION OF KINGS RIVER CASTING IS PROHIBITED.	WEIGHT: 45 LBS	SCALE: 1:10
		MODEL NUMBER: <b>WBBP - 60"</b>	SIZE <b>B</b>