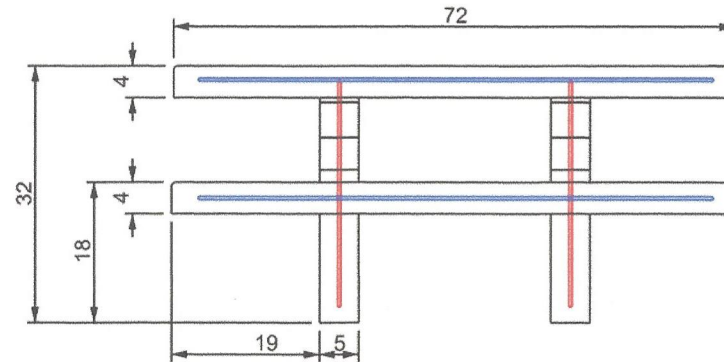
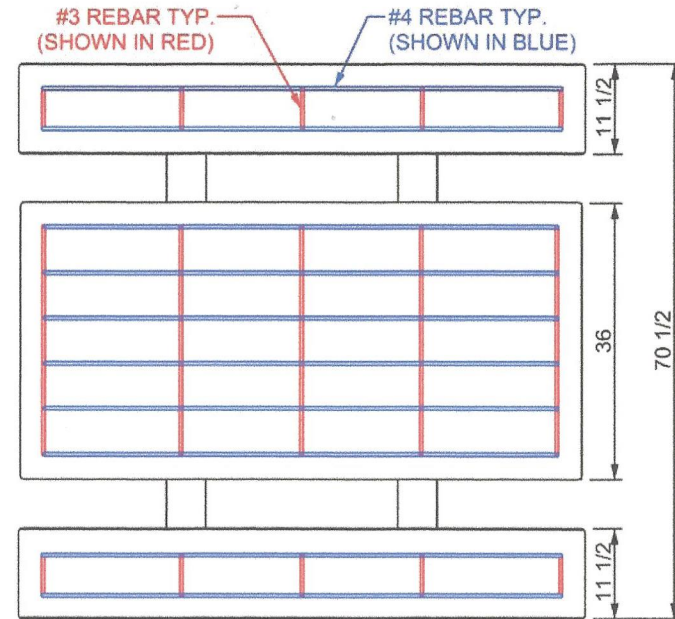
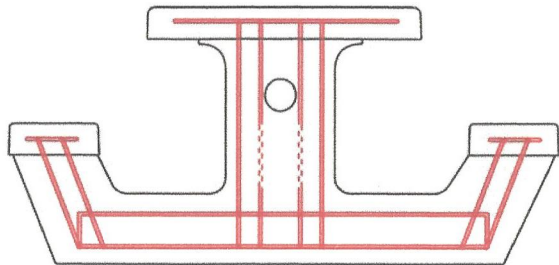
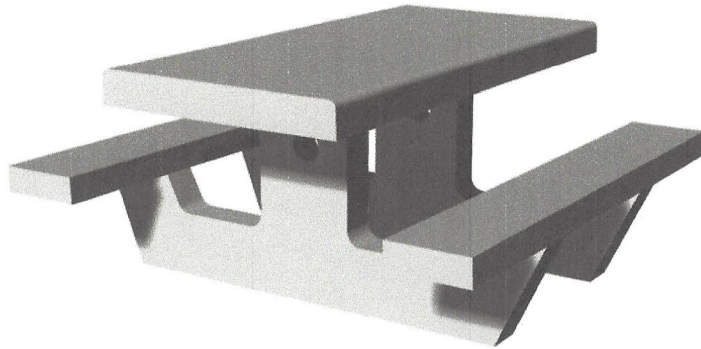


CONCRETE PICNIC TABLE - 6'



SCALE: 1/2" = 1'-0"



DESCRIPTION:		CONCRETE PICNIC TABLE 6'	
ADDRESS: 1380 NORTH AVE. SANGER, CALIFORNIA 93657 PHONE: (559) 875-8250 FAX: (559) 875-1491	THE INFORMATION CONTAINED IN THIS DRAWING IS THE SOLE PROPERTY OF KINGS RIVER CASTING. ANY REPRODUCTION IN PART OR WHOLE WITHOUT THE WRITTEN PERMISSION OF KINGS RIVER CASTING IS PROHIBITED.	WEIGHT: 2100 lbs.	SCALE: 1/2" = 1'-0"
		MODEL NUMBER:	SIZE
		CPT-6	B